

# NV COALITION FAST FACTS

## School Physical Therapist Assistant

 www.nvcoalition.com



### SCHOOL PHYSICAL THERAPIST ASSISTANT:

School Occupational Therapy Assistants practice under the supervision of an Occupational Therapist to help students develop sensory motor, fine motor and pre-vocational skills; coordinate with the Occupational Therapist on carrying out treatment plans; collaborate within the education team to support student success

### SCHOOL PHYSICAL THERAPIST ASSISTANT

School Physical Therapist Assistants work with students on gross motor skills, balance and coordination, positioning, mobility and safe access to school.

### QUALIFICATIONS:

- At a minimum, an associate's degree from an accredited occupational therapy assistant program
- Must pass the National Board for Certification in Occupational Therapy exam to use the title "Certified Occupational Therapist Assistant (COTA)"
- Must hold a state license

### WAGE:

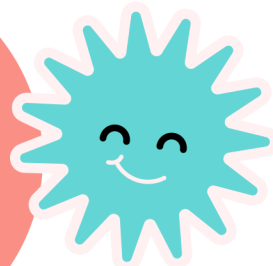
The median annual wage for physical therapist assistants was \$57,240 in May 2022.

### MORE INFORMATION...

- National Association of Occupational Therapists [www.aota.org](http://www.aota.org)
- Nevada Occupational Therapy Association [nota.wildapricot.org](http://nota.wildapricot.org)
- US Bureau of Labor and Statistics [www.bls.gov/ooh/healthcare/occupational-therapy-assistants-and-aides.htm](http://www.bls.gov/ooh/healthcare/occupational-therapy-assistants-and-aides.htm)

### JOB OUTLOOK:

Overall employment of physical therapist assistants and aides is projected to grow 19 percent from 2022 to 2032, much faster than the average for all occupations.



# NV COALITION FASTER FACTS!

## *School Physical Therapist Assistant*

SCHOOL  
PHYSICAL  
THERAPIST  
ASSISTANT



[www.nvcoalition.com](http://www.nvcoalition.com)



FASTER  
FACTS!

- ASSOCIATE'S DEGREE FROM AN ACCREDITED PROGRAM
- PRACTICES UNDER THE DIRECTION AND SUPERVISION OF A PHYSICAL THERAPIST
  - ASSISTS IN STUDENT'S GROSS MOTOR SKILLS, BALANCE AND COORDINATION, POSITIONING, MOBILITY AND SAFE ACCESS TO SCHOOL
  - NATIONALLY CERTIFIED
- JOB OPPORTUNITIES TO GROW MUCH FASTER THAN THE AVERAGE
- WORKS IN EARLY CHILDHOOD PROGRAMS, ELEMENTARY, MIDDLE AND HIGH SCHOOLS
  - NATIONAL MEDIAN ANNUAL WAGE: \$57,240